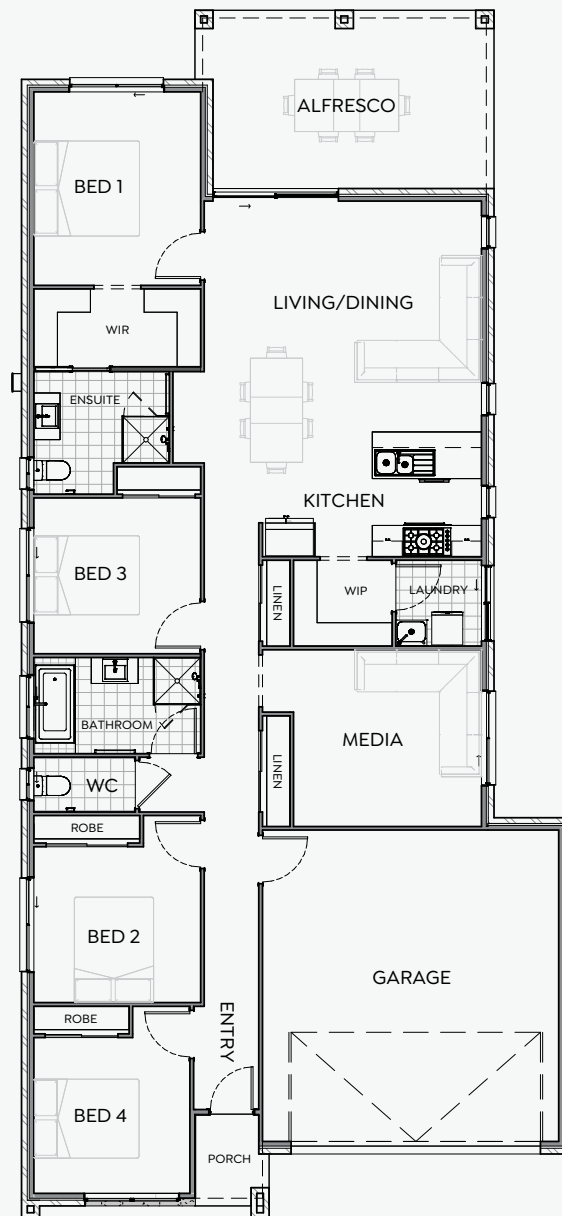


CASA FLOR 210 | 12.5m

At the heart of Casa Flor is a bright, open-plan living area that seamlessly connects the family room, dining space, and a contemporary kitchen. This inviting space extends to an outdoor alfresco area, perfect for entertaining or relaxing in the fresh air. A dedicated study nook provides the ideal space for work or study.

Designed for modern lifestyles, Casa Flor delivers both sophistication and practicality. Contact us today to personalise your dream home!



4 | 2.5 | 2 | 1 | 2

FRONTAGE	12.5m
EXTERIOR LENGTH	23.24m
EXTERIOR WIDTH	10.57m
TOTAL FLOOR AREA	210m ²

Disclaimer: The floor plan and images shown are for illustrative purposes only. Some features, finishes, and fixtures depicted may be upgraded options and are not included in the standard pricing. Dimensions are approximate and subject to change. Please contact Precision Living for full details on inclusions.

PRECISION LIVING
dreams crafted with precision

Visit precision-living.com
for more information