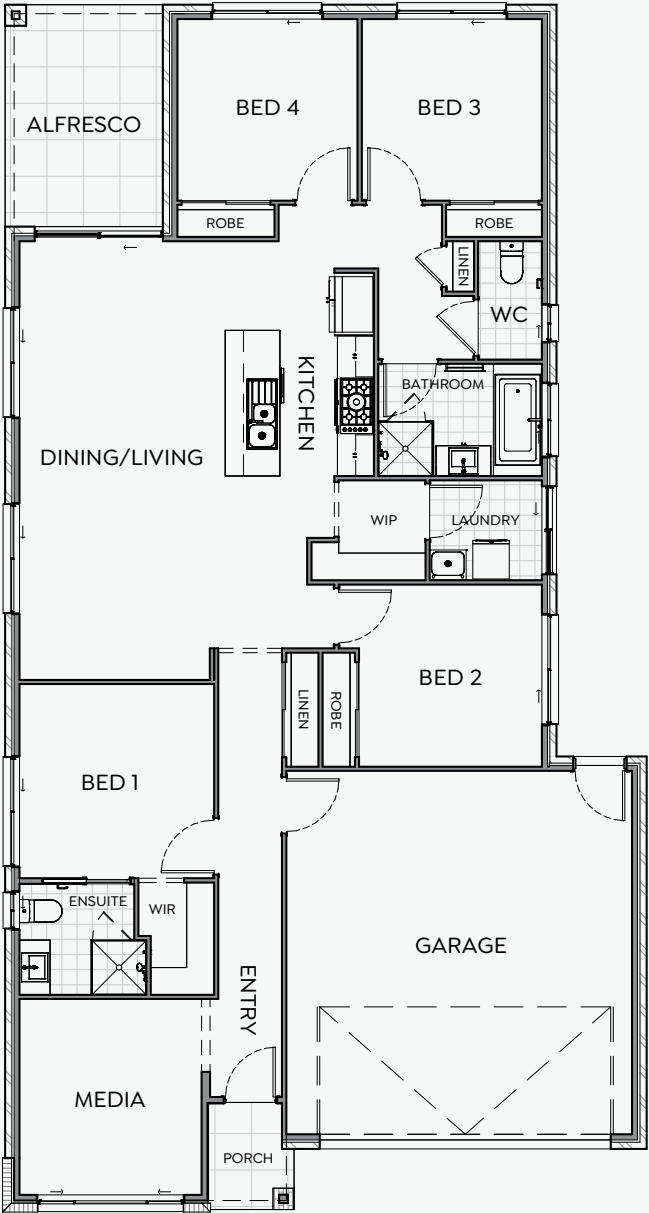







SOPHIE 185 | 12.5m

Experience a home that invites warmth, style, and function into every space. This thoughtfully crafted 4-bedroom design blends an open-plan family room, dining area, and kitchen, all flowing seamlessly onto an inviting outdoor living area—ideal for entertaining year-round. The Sophie also features a dedicated media room, perfect for family movie nights or unwinding in a cozy retreat, along with a luxurious main suite with a spacious walk-in robe for ultimate comfort and convenience.

Get in touch with us today to personalise the Sophie 185 to suit your lifestyle!



 4  2.5  2  1  2	
FRONTAGE	12.5m
EXTERIOR LENGTH	19.86m
EXTERIOR WIDTH	10.57m
TOTAL FLOOR AREA	185.8m ²

Disclaimer: The floor plan and images shown are for illustrative purposes only. Some features, finishes, and fixtures depicted may be upgraded options and are not included in the standard pricing. Dimensions are approximate and subject to change. Please contact Precision Living for full details on inclusions.



Visit precision-living.com
for more information