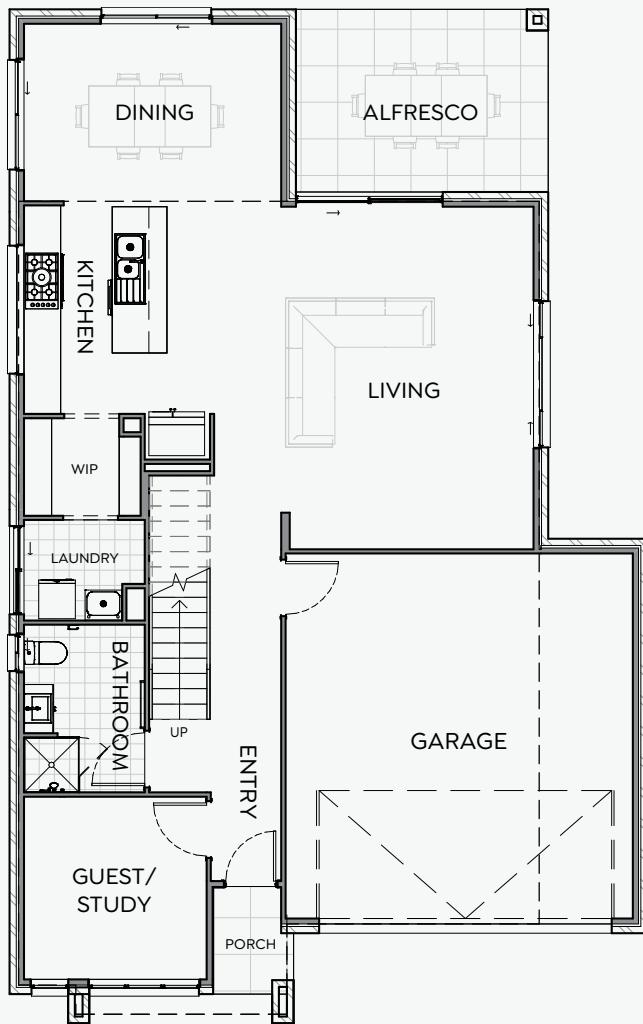


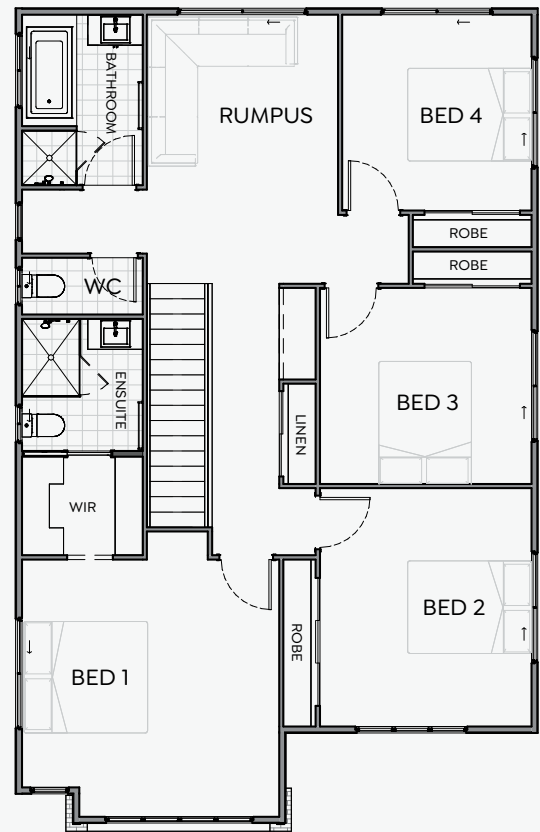
# THOMAS 256 | 12.5m

Enjoy a home that combines spacious, open-plan living with modern comfort and style. The heart of the Thomas is its flowing indoor-outdoor layout, with a seamless transition from the integrated living, dining, and kitchen area to the alfresco entertaining space. Perfect for gatherings or quiet nights in, this home also offers a generous leisure room upstairs along with a study nook, a truly ideal retreat for the kids

Reach out today to customise the Thomas to fit your lifestyle!



LOWER LEVEL



UPPER LEVEL

4 | 3.5 | 2 | 1 | 2

FRONTAGE	12.5m
EXTERIOR LENGTH	16.64m
EXTERIOR WIDTH	10.47m
TOTAL FLOOR AREA	256.5m <sup>2</sup>

Disclaimer: The floor plan and images shown are for illustrative purposes only. Some features, finishes, and fixtures depicted may be upgraded options and are not included in the standard pricing. Dimensions are approximate and subject to change. Please contact Precision Living for full details on inclusions.

**PRECISION LIVING**  
*dreams crafted with precision*

Visit [precision-living.com](https://precision-living.com)  
for more information