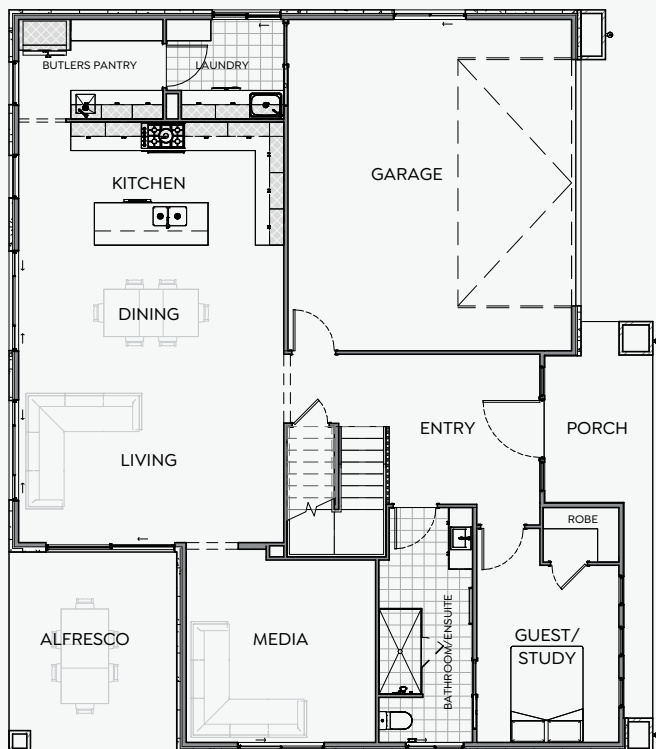


MAISON 360 | 17m

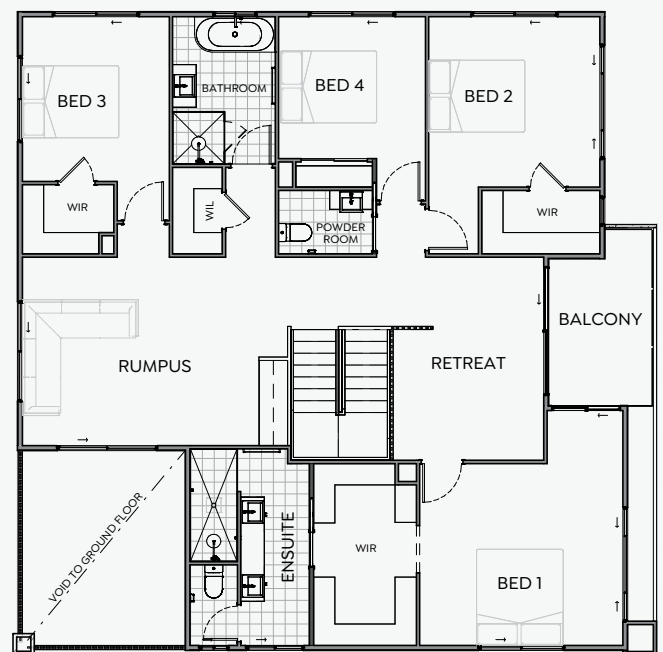
Step into a home of grand proportions and refined detail. At the heart of the Maison is an expansive, light-filled open-plan kitchen, living and dining domain that glides effortlessly to a generous alfresco—perfect for resort-style entertaining or effortless nights in.

Designed for elevated everyday life, the Maison adds a dedicated media room, an upstairs rumpus and a private retreat for true separation of spaces. With five bedrooms, four bathrooms, a wide, oversized garage and a statement front balcony, it's a residence crafted for comfort, presence and poise.

Ready to personalise? Tailor the Maison with curated options—from pantry enhancements and premium appliance packages to spa-inspired ensuites and study configurations—so it fits your block and the way you live.



LOWER LEVEL



UPPER LEVEL

5 | 3.5 | 2 | 1 | 2

FRONTAGE	17m
EXTERIOR LENGTH	13.59m
EXTERIOR WIDTH	15.67m
TOTAL FLOOR AREA	360m ²

Disclaimer: The floor plan and images shown are for illustrative purposes only. Some features, finishes, and fixtures depicted may be upgraded options and are not included in the standard pricing. Dimensions are approximate and subject to change. Please contact Precision Living for full details on inclusions.

PRECISION LIVING
dreams crafted with precision

Visit precision-living.com
for more information